



BOARD OF COMMISSIONERS
408 SW Monroe Ave., Suite 111
P.O. Box 3020
Corvallis, OR 97339-3020
(541) 766-6800
FAX (541) 766-6893

March 14, 2008

Ms. Debbie Colbert
Administrator Field Services Division
Oregon Water Resources Department
725 Summer Street NE, Suite A
Salem, Oregon 97301-1271

Dear Ms. Colbert:

Attached is Benton County's grant proposal. Our proposal is Phase 1 of a larger project and we believe our "Benton County Water Analysis and Demand Forecast" meshes well with the current work of the Oregon Water Resources Department's Oregon Water Supply and Conservation Initiative (OWSCI).

Our work will supplement the Department's contracted work to gain local and regional data on current water supply and projected future demand to year 2050. By leveraging the OWSCI survey with face-to-face contacts to "fill in the gaps," projected demand forecasts across the county and the sub-basins can be used to project more specific demand forecasts. Our education and outreach work will survey community values and collect issues as well as raise the collective consciousness level. Our committee structure blends technical expertise on both water and public outreach to inform the development of a long-term water policy and supply framework. The information collected in Phase 1 will be a driving force in determining the shape of the Phase II water supply shortcomings and strategies conservation and alternative supplies during 2009 fiscal year. This information will then be used to inform the policy makers in the cities and the county.

Benton County has been developing the proposed project for several months, gaining input and buy-in from a range of stakeholders across the community. By building a strong foundation for the project, the proposed technical, outreach and policy goals can be accomplished within the required timeline for OWSCI grant deliverables and the County's timeline of January 2009.

Benton County Commissioners are the conveners of this project and as such are reaching out across jurisdictional boundaries to engage stakeholders and elected officials in bordering counties – especially Linn and Lane.

Yours truly,

Linda Modrell

cc: Commissioners Jaramillo and Dixon
Adam Stebbins, Water Project Coordinator
Dr. Michael Campana, Steering Committee, Chair

Oregon Water Resources Department
Oregon Water Supply and Conservation Initiative
Benton County, Oregon- 2008 Community Request for Funding

1. **Name and Organization:** Benton County, Oregon- Board of Commissioners Organization: Benton County has a population in excess of 80,000 and diverse land use and water demands countywide. Benton County encompasses 5 incorporated cities and smaller unincorporated cities, large expanses of agriculture, forest lands, and the Oregon State University campus.
2. **Contact Information:**
Primary Contact: Mr. Adam Stebbins, Mailing Address: Benton County, 408 SW Monroe Ave., Suite 111 Corvallis, OR 97333 attn. Adam Stebbins Phone: (541) 766-6085; email: Adam.Stebbins@co.benton.or.us
3. **Project Overview:** Benton County is the project convener and coordinator for assembling data and developing a process to produce a **Phase I** "Benton County Water Analysis and Demand Forecast". The proposed project will generate a **countywide technical report** detailing current and projected water supply based on available state agency, municipal, irrigation district, agriculture, industry, county and other organizations' water supply and projected population data. A parallel **outreach and education process** is intended to educate the wide range of community groups and citizens on ground and surface water issues, and to solicit public comment on local water issues and collect community values. A **policy structure** to coordinate technical and outreach work will be formed and provide a foundation and model for **Phase II** water conservation and supply alternatives analysis.
4. **Community Water Supply Limitations facing Benton County:** How we manage the water we have will impact our community's quality of life and economic vitality. The Oregon Water Resources Commission and Department work with counties, in particular, to coordinate activities related to water supply (Snell, 2007). From irrigation district to large farms and rural landowners to cities, the communities within Benton County have water supply policies and plans that are experiencing ever-growing mismatches as use increases. Lack of coordinated county-level assessment, policy, planning, and management could cause serious breaches in water security, economic vigor, and environmental quality. Coupled with long term factors of increased population pressure over the next 50 years, degrading water quality conditions (ODEQ-GWMA, 2006) and climate change (Oregon Commission on Climate Change, 2007), several water supply issues have arisen and are on the horizon throughout Benton County:

* A **substantial increase in demand** for high quality water within both rural and urban areas is projected to grow heavily over the next 50 years. A countywide analysis to project population and inform a coordinated policy and plan to address if water supply is adequate to meet this growth, is a major need across land use boundaries.

* **Growing conflict among and between rural areas, cities, and the environment** is being fueled by two primary issues:

1. Impacts (perceived and documented) of groundwater withdrawals on other users/uses water supplies within the community.
2. Municipal diversions and exempt/regulated wells decreasing adequate in-stream and minimum stream flows affecting water quality for community residents, species of concern, wildlife, and recreation values of major basin and watershed areas (Willamette River, Mary's River, and the Long Tom River) within Benton County.

* **Southern Benton County shares a Groundwater Management Area (GWMA)** with Lane and Linn Counties (ODEQ-SWVGMA, 2006). This cross-jurisdictional GWMA contains contaminated groundwater from high nitrate concentrations affecting rural-domestic well water supply that is currently restricting quality water supply access to an estimated 21,000 or more county residents (ODEQ-SWVGMA, 2006).

* **Lack of a comprehensive and publicly accessible assessment** on the current and projected condition of water supply across Benton County is not available to inform citizens, decision makers, and stakeholders. There is no cooperative framework to analyze water supply of cities, agriculture, and rural areas across Benton County. Information on water supply resources such as Water Management and Conservation Plans must be pooled for use in a countywide water supply assessment.

5. Project Description:

5a.) Scope of Work: The proposed Phase 1 project consists of four major tasks

1.) **Project Coordination and Contractor Assistance:** A qualified Water Project Coordinator hired to assist in compiling existing water supply data drawing from the:

- Oregon Water Supply and Conservation Initiative (OWSCI) survey;
- Current and applied-for water supply permits and certificates;
- Countywide exempt well estimate;
- Water Management and Conservation Plans of organizations across Benton County;
- Benton County Public Works and Environmental Health reports and databases;
- Other available water supply data sources serving Technical Team and Committee needs.

The Water Project Coordinator will also be responsible for the overall management of the project including staffing and planning of committees and teams and managing Contractor work (see below).

2.) **Professional Contractor:** A professional services contract will be awarded to an experienced, local, Contractor to estimate population growth for Benton County and accompanying water supply needs based on the existing water supply and infrastructure through years 2025 and 2050. Water supply forecast data will be collected through the administration and review of the OWRD-OWSCI survey to fill data gaps (see **Methods Proposed**). Population forecast/water supply needs will be consistent with best available data and Contractor methodology. The Contractor will also specifically address and estimate exempt well use/impacts on water supply throughout Benton County.

3.) **Public Outreach and Education:** Using Benton County and partnering organizations' cash and in-kind contributions face-to-face contact will be made to address data gaps in the OWRD-OWSCI 2008 survey. Educational presentations, maps, and white papers on groundwater and surface water supply within the community will be developed and delivered through community events. The outreach will elicit community values and water supply related issues through on-line survey and paper surveys, resulting in a database-matrix prepared by the Water Project Coordinator documenting community water supply issues and values on the Benton County website for public access.

4.) **Formation of a Water Supply Policy Structure:** A Steering Committee will be composed of elected representatives of Benton County and incorporated cities, neighboring Lane and Linn county representatives, and major regional water supply stakeholders (see **Attachment 2**). Benton County has pending Memoranda of Cooperation (see **Attachment 3**) with city and county representatives. The goal is to form a process to review project work and invoke the participation of upstream and downstream counties in providing sustainable water supply alternatives analysis through a **Phase II** project.

5b.) Methods Proposed: The project will be a collaborative effort between stakeholders across Benton County, Lane and Linn County and the Oregon Water Resources Department. Benton County (Board of Commissioners) will be the lead convening and coordinating organization of the project, and will be managed by Adam Stebbins of the Benton County Board of Commissioners Office. Mr. Stebbins is a recent Master’s graduate in Water Resources (OSU) and will staff committees/teams, and collect community values and issues, and work with the Contractor in completing deliverables and providing update and final reports to OWRD. There will be approximately 12 Steering Committee (SC) members appointed, tasked with reviewing the Technical and Outreach Teams work and will meet regularly during the project period. The Executive Committee will be a subset of the SC that meets independently to evaluate work of the Technical and Outreach Teams. The Technical Team will review work of the Contractor and will be responsible for peer review of the data collection and projections. The Outreach Team will be responsible for developing the community ‘Benton County water supply values and issues survey’, setting community outreach event agendas, and completing face-to-face surveys with key stakeholders. The Technical and Outreach Teams will have 5 members with an acting primary supervisor in completing the tasks outlined in the **Scope of Work** (see **Figure 1**).

5c.) Background:

At the Benton County Water Supply “kick off meeting” planned and facilitated by Benton County on September 13th, 2007, citizens and stakeholders (~90 attendees) voiced their concerns on current and potential water supply issues throughout Benton County. The consensus was the need for a countywide water supply planning effort. Since September 2007 Benton County has worked continuously to establish a path forward to form a countywide water supply analysis. Benton County has met with and gained support of city representatives, gained project development assistance from OSU-IWW funding of an intern, and met with numerous stakeholders to form a community-based approach for completing a countywide water supply analysis. Through this process community support and assistance from local organizations (see **Participating Organizations**) has been achieved for use in the proposed project with pending Memorandum of Cooperation’s. Additionally, in October 2007 Benton County instituted a Water Ordinance as a first step to meet water supply needs.

5d.) Project Schedule:

Activity	March	April	May	June	July	August	Sep	Oct	Nov
Submit Funding Request									
Hold Stakeholder Representation Announcement; OWRD Announces Awards									
Finalize staffing of Committees and Teams									
Set Charters and Tasks									
Initiate Scope of Work									
Complete Scope of Work									
Draft Progress Report									
Submit Progress Report to OWRD									
Finish Scope of Work									
Draft Final Report									
Submit Final Report to OWRD (11/15/08)									

E.) Outcomes and Benefits:

- A technical report entitled “Benton County Water Analysis and Demand Forecast” documenting major water supply use and demand forecasts based primarily on the OWRD-Benton County collaborative survey and Contractor findings.
- At least three Public outreach events to educate the Benton County community of stakeholders and citizens on ground and surface water supply science and issues.
- A countywide survey on community water supply issues and values will be made publicly available via the Benton County website and other avenues, with results documented in a public database-matrix.
- A regional policy structure to review technical and outreach work to form a foundation for a cross-county water supply assessment with Lane and Linn counties. A planned **Phase 2** project will address alignment of availability with the possible effects of climate change and population growth supply including **Phase 1** surface water and groundwater supply data, with proposed alternative mitigation strategies of conservation, storage, and protection.

6.) Partnership Organizations and Stakeholders:

Benton County has standing partnerships developed through county efforts to date, by engaging a variety of local and regional organizations to develop and participate in the **Phase I** project:

Oregon Water Resources Department: District 16 water master (Mike McCord) has verbally agreed to serve on the Technical Team and the OWRD-OWSCI survey will be administered to willing countywide large water supply users consistent with the goals of survey.

Cities of Adair Village, Albany, Philomath, Monroe, and Corvallis (pending with approval from city council meeting scheduled in April) (see **Letters of Support; Memoranda of Cooperation**).

Benton County Soil and Water Conservation District (SWCD) has agreed to provide \$5,000 plus in-kind staff assistance in support of outreach to gain large farmer/rural landowner participation in the data gathering process and provide outreach aid (see **Letters of Support; Budget**).

Mary’s River and Long Tom Watershed Council will assist in providing outreach (white papers, community water supply survey, project brochures) to a wide community of stakeholders across county watersheds through existing channels. MRWC staff has expressed interest in serving on the Outreach Team (see **Letters of Support**).

Oregon State University-Institute for Water and Watersheds (IWW) funded a graduate student-intern to begin project development and management. IWW also will continue support of this project to supply in-kind staff time to chair the Executive Committee and provide funding of the Water Project Coordinator (see **Letters of Support; Budget**).

Intra-County cooperative network across Benton County departments of: Public Works, Environmental Health, Community Development, and Planning were formed aiding in framing water issues and needs that are a focus of this project. Benton County will also provide \$8,204 in cash to be used as needed during the project period.

7.) Involvement of Local Government Representatives:

The project structure places city, county, major stakeholders (e.g. irrigation districts) and state government officials as the review authority of the project process and findings through Steering Committee representation. All participating cities within Benton County may choose a single representative to serve on the SC oversight. Additionally, Albany City Manager, Wes Hare, and Lane County Commissioner, Bill Fleenor (see **Letters of Support**) has agreed to serve in an ex-officio capacity. Benton County Commissioners will convene and coordinate all Steering Committee meetings.

8.) Project benefits to region-wide water supply issues:

The **Phase I** project area is focused on Benton County, a political jurisdiction. However, water supply and demands reach beyond political jurisdictions where policy and management of water resources need to be accomplished at the watershed and basin levels. We begin at the county but will work to engage representatives (Lane and Linn) and stakeholders (watershed groups, soil and water conservation districts, etc.) within watershed areas (Long Tom and Luckiamute) that bridge county lines. This approach provides a setting for a cross-county water supply framework to emerge. Achieving the goal of cross-county watershed collaborations during the **Phase I** project period, will form the collaborative capacity for **Phase II** project assessment to determine groundwater and surface water supply, conservation, and water supply storage alternatives that reach outside of discrete political lines.

9.) Project benefits to watershed issues:

- * Provides a single, comprehensive, publicly available report detailing analysis of current and projected water supply and use within Benton County watershed areas.
- * Synthesizes a range of water supply data while also using this information to project water supply within participating watershed areas to inform and encourage improved conservation, management, and supply alternatives through a **Phase II** project.
- * Forms a collaborative geopolitical process to develop and leverage technical and outreach funding for future projects of active watershed councils across Benton County.

References

1. Snell, April (August, 2007). Water Supply Planning Perspectives from Oregon Counties: An Overview of the Water Resources Department's County Outreach Project. *Oregon Sea Grant Natural Resources Policy Fellow*.
2. Aitken, G. et. al. (2003) Southern Willamette Valley Groundwater Assessment (SWVGMA) 2000-2001 Nitrate Study. State of Oregon, Department of Environmental Quality. Available online at <http://groundwater.orst.edu/Willamette/DEQ-doc/2001NitrateReport.pdf>.
3. State of Oregon Department of Energy; Climate Change and Oregon <http://www.oregon.gov/ENERGY/GBLWRM/climhme.shtml>.

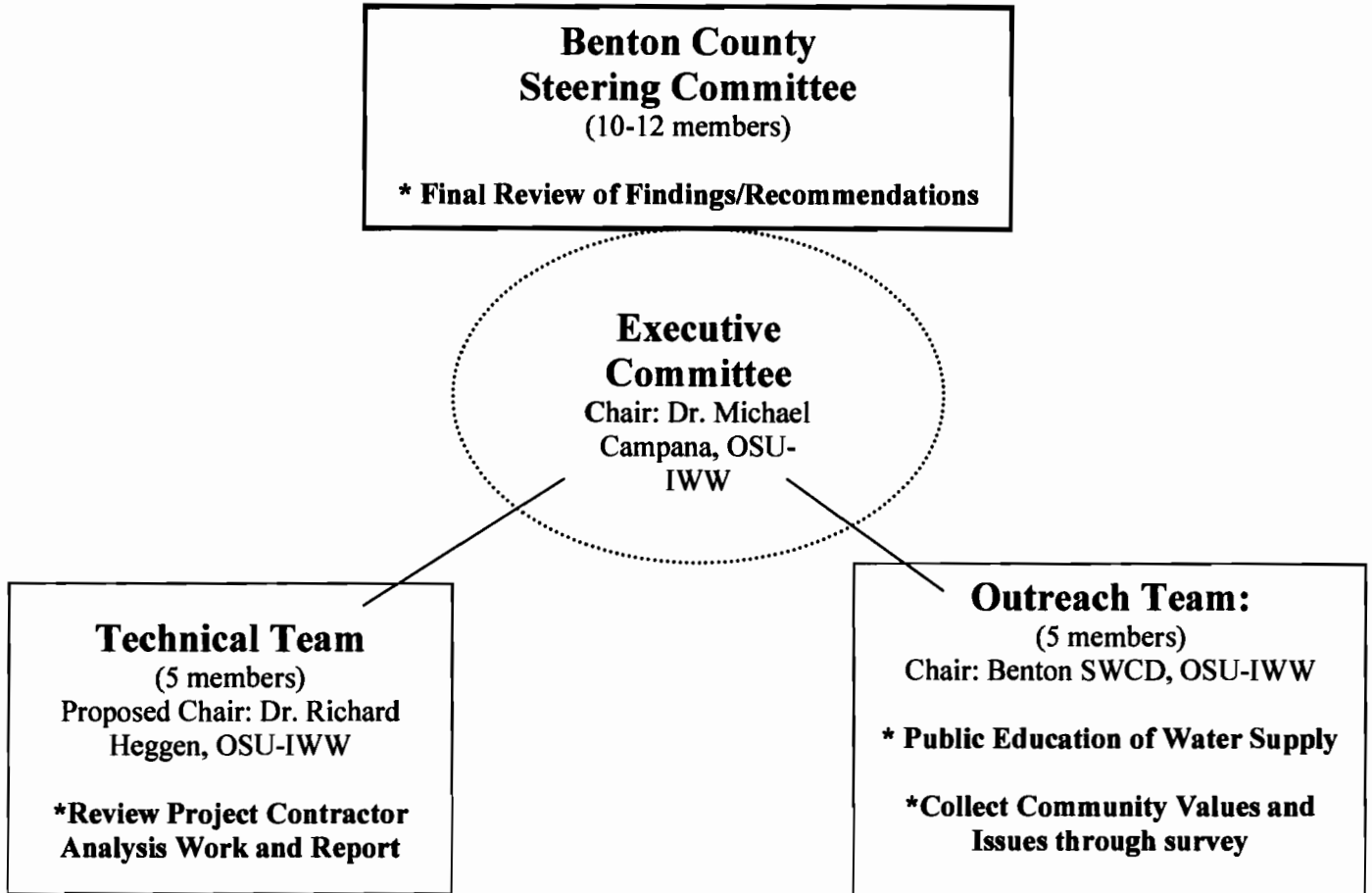
Attachment 1. Project Budget for OWSCI Grant (4/15/08-11/15/08) period

Scope of Work Tasks	OWRD	Benton County		OSU-IWW*		Benton County SWCD		Total	
	(Cash)	(In-Kind)	(Cash)	(In-Kind)	(Cash)	(In-Kind)	(Cash)	(In-Kind)	(Cash)
1.) Project Coordinator and Contractor Assistance compile data, assist/direct project contractor work, assist/direct outreach and policy processes, develop and deliver update reports to OWRD			\$ 5,704		\$ 6,500				\$ 12,204
2.) Contractor Deliverables water supply analysis, demand forecast, report writing	\$ 15,000								\$ 15,000
3.) Public Outreach and Education OWSCI face-to-face survey implementation, 'water values and issues survey' development, public education event agendas and materials			\$ 2,500	\$ 1,000		\$ 5,100	\$ 5,000		\$ 13,600
4.) Water Supply Policy Structure staffing of committees and teams, coordination of policy process, development of required materials	\$ 5,000	\$ 3,000		\$ 1,000					\$ 9,000

	OWRD	Benton County		OSU-IWW*		SWCD		Total	
	(Cash)	(In-Kind)	(Cash)	(In-Kind)	(Cash)	(In-Kind)	(Cash)	(In-Kind)	(Cash)
Total	\$ 20,000	\$ 3,000	\$ 8,204	\$ 2,000	\$ 6,500	\$ 5,100	\$ 5,000	\$ 10,100	\$ 39,704

**pending delivery to Water Project Coordinator for use on OWSCI Project*

Attachment 2. Proposed Committee Structure for Phase 1 'Benton County Water Analysis and Demand Forecast'



Attachment 3. Memoranda of Cooperation Document Pending Approvals

MEMORANDUM OF COOPERATION

**Between
Benton County
and the**

(watershed councils, irrigation districts, cities, Lane and Linn Counties, and other stakeholders)

Water Policy and Supply Plan

Purpose: The Memorandum of Cooperation (MOC) is intended to promote collaboration between the parties for the purpose of creating a cross-jurisdictional and cross-watershed water policy and supply plan to be considered by elected officials in the cities and counties from which data is collected in the upper Willamette Basin. This effort is consistent with the Governor's H2O Initiative and Oregon Water Resources Department's charge from the Governor and Oregon's Legislature.

The MOC includes:

- 1) Sharing a common interest in a sustainable water supply;
- 2) Acknowledging the collective goals of the Parties' to provide water to current and future generations of the county;
- 3) Desiring to promote and enhance social well-being, environmental quality, and sustainable economic development;
- 4) Desiring to promote public health and community welfare by fostering interdisciplinary scientific research;
- 5) Acknowledging the collaborative mission of the Parties' to establish broad policy;
- 6) Acknowledging the many municipalities and others have done admirable work to collect use data, develop management programs that speak to resource conservation, high quality drinking water, and adherence to federal and state law

Recognizing the Parties' mutual interest in working together with technical assistance and outreach from the Institute for Water and Watersheds at Oregon State University, to contribute to creating Water Supply Policy relationships with the *(tbd)* and water resource management organizations, including, but not limited to: the Oregon Water Resources Department, Watershed Councils, Private Water Utilities, Agriculture, Businesses of the region and participating Counties;

The *(tbd)* and Benton County do hereby simultaneously declare the following framework for the Parties' working relationship:

Article I

The Parties will use their best efforts to establish a long-term, collaborative working relationship to aid in forming a Benton County Water Supply Plan and Policy, starting with participation in completing water needs analysis and assessment.

The Parties are especially interested in pursuing cooperative opportunities in the following areas of common interest:

- 1 Clean water supply for current and future populations of Benton, Lane, and Linn Counties: Willamette River Headwaters communities
2. Sustainable water supply with efficient delivery systems for city residents, businesses, agriculture and other natural resources within the City's jurisdiction
3. Consensus building, public participation, and conflict resolution and management during working relationship forums that discuss water resource analysis and policy initiatives.
4. Sustainable management of both surface and groundwater resources
5. Public education and outreach regarding local water resource issues
6. Sustainable management of wastewater
7. Effects of climate change on future water supply

Article II

Each party shall designate a principal representative to serve as the primary point of contact between the parties on all matters arising under this Memorandum of Cooperation.

Article III

Any collaborative activity undertaken between the Parties shall only be done under the authority of the laws, regulations, and policies governing each party individually.

Article IV

Notwithstanding any other provision, nothing in this Memorandum of Cooperation shall be construed as binding. Further, nothing in this document shall be construed as either authorizing or obligating either party to commit funds or resources to any project or work except as otherwise authorized by the laws, regulations, and policies governing each party individually.

Article V

This Memorandum of Cooperation shall become effective when signed by all principal representatives.

 Date

 Date

Attachment 4. Letters of Support



Marys River Watershed Council

Sandra Coveny, Coordinator

P.O. Box 1041, Corvallis OR 97339

Phone/Fax (541) 758-7597

web site: www.MRWC.net

email: coordinator@mrwc.net

"Working together for watershed health"

March 11, 2008

Debbie Colbert,
Administrator Field Services Division,
Oregon Water Resources Department
725 Summer Street, NE, Suite A
Salem, Oregon 97301-1271

Re: 'Phase I: Benton County Water Analysis and Demand Forecast'
2008 Community Request for Match Funding

Dear Oregon Water Resources Department Representatives,

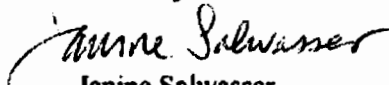
The Marys River Watershed Council strongly supports the Benton County application for funding through the Oregon Water Resources Department Water Supply and Conservation Initiative. The September 2007 kickoff meeting in Benton County demonstrated the community's interest and support to form a long term water analysis and demand forecast for policy and planning that ensures a clean and sustainable water supply for its citizens and their environment over time. The proposed **Phase 1** project will be an important first step in helping the Benton County community determine regional water supply issues and move towards practical conservation, planning, and storage solutions in the future.

In our assessment and analysis of the limiting factors for water quality and aquatic species in the local watershed, water quantity is the number one contributing factor. This grant is needed to support community efforts to engage public input and technical expertise in this planning process. The proposed county approach is necessary and timely, and works to explore the complex public issues concurrent with developing a foundation for comprehensive water supply management policy. The Marys River Watershed Council considers water supply management one of our top issues, and will, as funding allows, contribute our support to the project in the following ways:

- Help convene public forums relevant to this topic,
- Lend our technical experts to this process,
- Develop collaborative projects where opportunities arise, and
- Disseminate information that facilitates public understanding of our water supply issues.

We hope you too will lend your support to this important proposal.

Sincerely,


Janine Salwasser
Marys River Watershed Council Co-Chair



BILL FLEENOR

Lane County Commissioner
West Lane District
Bill.Fleenor@co.lane.or.us

March 8, 2008

Debbie Colbert,
Administrator Field Services Division,
Oregon Water Resources Department
725 Summer Street, NE, Suite A
Salem, Oregon 97301-1271

From: West Lane County Commissioner – William Fleenor

Re: **'Phase I: Benton County Water Analysis and Demand Forecast'**
2008 Community Request for Match Funding

Dear State of Oregon Water Resources Department Representatives,

On September 13th, 2007 Benton County Board of Commissioners held a "kickoff meeting", to discuss Benton County, Oregon's water users and uses. More than 100 attendees from business, agriculture, public, and government engaged state and local water experts on the current and future issues of water supply within western Oregon and specifically Willamette Basin headwaters. The alignment of statewide planning goals and local land use and water planning drove the take home message of the day: Benton County and neighboring counties need to form a long term water analysis and demand forecast that builds on city and county plans and works with the state to form policy and planning that ensures a clean and sustainable water supply for its citizens and their environment over time.

Benton County has since sustained the water supply policy and planning momentum initiated in 2007, through:

- **A Partnership with the OSU-Institute for Water and Watersheds.**
- **Development of Water Supply Planning Partnerships.**

This **Phase 1** project spans across jurisdictional boundaries and will be an important first step in helping the Benton County community determine regional water supply issues and move towards practical conservation, planning, and storage solutions in the future. You may count on my office to actively support the Benton County **Phase 1** project.

Sincerely,

William A. Fleenor, Ph.D.
West Lane County Commissioner



Michael E. Campana, Director
Institute for Water and Watersheds
Oregon State University
210 Strand Agriculture Hall Corvallis, OR 97331-2208
Voice: 1 541 737 2413 Fax: 1 541 737 1887
<http://water.oregonstate.edu> aquadoc@oregonstate.edu

March 10, 2008

Debbie Colbert, Ph.D.
Administrator, Field Services Division
Oregon Water Resources Department
725 Summer Street, NE, Suite A
Salem, Oregon 97301-1271

RE: Phase I: Benton County Water Analysis and Demand Forecast -
2008 Community Request for Match Funding

Dear Dr. Colbert,

The Benton County Commissioners requested that I write a letter of support for their funding request for the *Benton County Water Analysis and Demand Forecast*. I am happy to do so. As you consider their request, please be advised that the Institute for Water and Watersheds (IWW) has been funding two internships supporting the City of Corvallis' water supply protection program and the Benton County Commissioners' efforts at county-wide water planning since Fall 2007 to "jump start" local water inventory and protection efforts.

IWW has committed additional funding to support Benton County's efforts to support the Oregon Water Resources Department Water Supply and Conservation Initiative matching funding, if awarded to Benton County. IWW has set aside approximately \$1,500 to \$2,000 to support the intern assisting Benton County. This is in addition to \$2,000 that was previously awarded to the intern who assisted the county commissioners start the planning process in 2007. In addition to this financial commitment, both Todd Jarvis and I are actively involved in the planning process on a *pro bono* basis.

Please feel free to contact me directly if I can provide any additional information about how the IWW can assist with this important water initiative.

Respectfully,

Michael E. Campana, Ph.D.
Director



**Action
Through
Understanding**

Coordinator/B.D.
Dana Erickson
(541) 683-6578

**Stewardship &
Outreach**
Jenna GARMON
(541) 683-6949

**Projects &
Monitoring**
Cindy Thiesman
(541) 683-2983

Steering Committee

Lower Long Tom
Jim Fendergrass,
Chair
Eric Freepson,
Tony Stroda

Upper Long Tom
Patti Little
Tina Fenley,
Treasurer
Ric Ingham,
Vice-Chair

Amazon
Peg Boulay
Vice-Chair
Eric Wold
Brad Taylor

At Large
Ryan Colley
Rich Reeves
Cory Johnson
Recording Secretary
Kat Beal
Will Bondioli,

731 S. Dunsmuir
Eugene, OR 97403
Fax: 683.6998

www.longtom.org

March 12, 2008

Debbie Colbert,
Administrator Field Services Division,
Oregon Water Resources Department
725 Summer Street, NE, Suite A
Salem, Oregon 97301-1271

Re: Support for 2008 Community Request for Match Funding
'Phase I: Benton County Water Analysis and Demand Forecast'

Dear Ms. Colbert,

As an affected stakeholder, the Long Tom Watershed Council supports the Benton County Water Analysis and Demand Forecast project request for match funding and hopes you will rank the project highly and grant their request for match funding. The County has engaged in the initial process of public engagement and has laid out a thorough public process for work to be completed in this proposal. Their planning shows an understanding of the complex nature of the resource itself, the need to plan alongside neighboring jurisdictions as much as possible, and the need to engage all stakeholders.

The Long Tom River flows into Benton County for six miles until its confluence with the Willamette River. It's proximity to urban areas and extensive agricultural land and its availability and consistency of flow make it susceptible to withdrawals that could overtap the river. It currently has no instream flow protections. Considering growth projections for the area, recent proposals for irrigation withdrawals, new wells for the small towns in the area, and the general demand on water expected in the near and mid-term future, taking a proactive and thorough approach to planning will be essential.

The Long Tom Watershed Council is a citizen-based 501c3 organization with 4 staff and a diverse and engaged board. The Council has been active in watershed monitoring, restoration and education since 1998. We would especially like to participate in this effort from a conservation standpoint. We are confident from conversations with the lead Benton County Commissioner and staff for this project that the County would consider forming Supply and Conservation Partnerships.

We anticipate the work on this project may inspire neighboring jurisdictions to undertake similar efforts in conjunction or soon after. The Long Tom River Basin is almost entirely located within the next jurisdiction south, Lane County.

Sincerely,

Dana Erickson, Executive Director



Eugene Water & Electric Board

500 East 4th Avenue/Post Office Box 10148
Eugene, Oregon 97440-2148
(541) 484-2411
www.eweb.org

March 11, 2008

Debbie Colbert,
Administrator Field Services Division,
Oregon Water Resources Department
725 Summer Street, NE, Suite A
Salem, Oregon 97301-1271

Re: 'Phase I: Benton County Water Analysis and Demand Forecast'
2008 Community Request for Match Funding

Dear Ms. Colbert,

Our organization supports the Benton County Phase I: Water Analysis and Demand Forecast project being submitted for Match Funding under the Oregon Water Supply & Conservation Initiative (OWSCI).

This project spans across jurisdictional boundaries and will be an important first step in helping the Benton County community determine regional water supply issues and move towards practical conservation, planning, and storage solutions in the future. This project would also provide information and data useful to water providers in the Southern Willamette Valley especially relating to our proposed OWSCI project on accessing Federal Storage Water for municipal purposes. As more attention gets placed on regional water planning it is clear that watershed boundaries will necessitate support from multi-jurisdictional stakeholders.

EWEB would like to encourage the agencies to support work like what Benton County is proposing, because it truly leads the way for other counties in Oregon and is critical to broader community solutions around regional water supply planning.

Sincerely,

Tom Buckhouse
Water Division Director

CC: Brad Taylor, EWEB, Water Resource and System Planner



6030 William R. Carr Av.
Adair Village, OR 97330
541-745-5507

March 13, 2008

Debbie Colbert,
Administrator Field Services Division,
Oregon Water Resources Department
725 Summer Street, NE, Suite A
Salem, Oregon 97301-1271

From: Drew Foster, City Administrator
City of Adair Village

Re: **'Phase I: Benton County Water Analysis and Demand Forecast'**
2008 Community Request for Match Funding

Dear Esteemed State of Oregon Water Resources Department Representatives,

Benton County and neighboring counties need to form a long term water analysis and demand forecast that builds on city and county plans and works with the state to form policy and planning that ensures a clean and sustainable water supply for its citizens and their environment over time.

Benton County has since sustained the water supply policy and planning momentum initiated in 2007, through:

- **A Partnership with the OSU-Institute for Water and Watersheds.**
- **Development of Water Supply Planning Partnerships.**

This **Phase 1** project spans across jurisdictional boundaries and will be an important first step in helping the Benton County community determine regional water supply issues and move towards practical conservation, planning, and storage solutions in the future. Adair Village will support the Benton County **Phase 1** by taking part in discussions with other jurisdictions and supporting data gathering efforts.

Sincerely,

Drew Foster, City Administrator

Cc: Adam Stebbins

RECEIVED

MAR 17 2008

WATER RESOURCES DEPT
SALEM, OREGON





Benton Soil and Water Conservation District

305 SW C Avenue, Suite 1
Corvallis, OR 97333
office@bentonswcd.org

Phone (541) 753-7208
Fax (541) 753-1871
www.bentonswcd.org

March 7, 2008

Debbie Colbert,
Administrator Field Services Division,
Oregon Water Resources Department
725 Summer Street, NE, Suite A
Salem, Oregon 97301-1271

RECEIVED

MAR 12 2008

**WATER RESOURCES DEPT
SALEM, OREGON**

RECEIVED

MAR 12 2008

**WATER RESOURCES DEPT
SALEM, OREGON**

Re: 'Phase I: Benton County Water Analysis and Demand Forecast'
2008 Community Request for Match Funding

Dear Esteemed State of Oregon Water Resources Department Representatives,

The Benton Soil and Water Conservation District is pleased to support the application for funding through the Oregon Water Resources Department; "Phase I: Benton County Water Analysis and Demand Forecast" ". On September 13th, 2007, Benton County Commissioners took the leadership role to help address water quality and current and future issues of water quantity in western Oregon by convening a well attended public discussion, comprised of 100 attendees from agriculture, business, public and government. The Benton County Commissioners and neighboring jurisdictions have realized that allowing future development in Willamette Basin headwaters without a strategic water plan will continue to impact the quality and quantity of our water resources. Benton County and neighboring counties need to form a long term water analysis and demand forecast that builds on city and county plans and works with the state to form policy and planning that ensures a clean and sustainable water supply for its citizens and their environment over time.

Benton County has since sustained the water supply policy and planning momentum initiated in 2007, through:

- A Partnership with the OSU-Institute for Water and Watersheds.
- Development of Water Supply Planning Partnerships.

The Benton Soil and Water Conservation District will contribute in the following ways to the success of this planning process. We can provide \$5,100 in-kind support by assisting in the organization and advertisement of community workshops, participating in stakeholder/steering committee meetings. In addition, we will provide a \$5000 cash contribution to this grant proposal.

We strongly support the funding of this Phase 1 project to help establish the initial framework to span across jurisdictional boundaries to help the Benton County community determine regional water supply issues and move towards practical conservation, planning, and storage solutions in the future.

Sincerely,

Tom Bedell, Chairman, Board of Directors

The Benton SWCD mission is to provide leadership to Benton County residents through education and technical assistance for conservation and responsible use of soil, water and related resources through a balanced, cooperative program that protects, restores, and improves those resources.

